



USING VoIP WITH TALKSHOE

Connecting to a Community Call™ Using VoIP (Voice-over IP) Software (SJLabs'™ SJPhone™)



Using VoIP with TalkShoe is simple and it only takes a few minutes to configure.

Below are instructions on how to configure SPhone™ to connect to TalkShoe™.

You will need the following applications:

SPhone

The premier open-source, free, SIP-phone client. Available at: <http://www.sjlabs.com/>

TalkShoe Classic™

Our live client. Available at: <http://www.talkshoe.com/>

Choose your configuration:

Configuration 1 1

Default configuration. Start here, and if the settings presented in this configuration do not work, try one of the other configurations, based on the problems you encounter.

Configuration 2

Use this configuration if you are connecting from Work or another high-traffic area where you have many people connecting to a network. Also use this configuration if you have tried Configuration 1, but do not hear the TalkShoe Operator after connecting to the telecom bridge.

Configuration 3

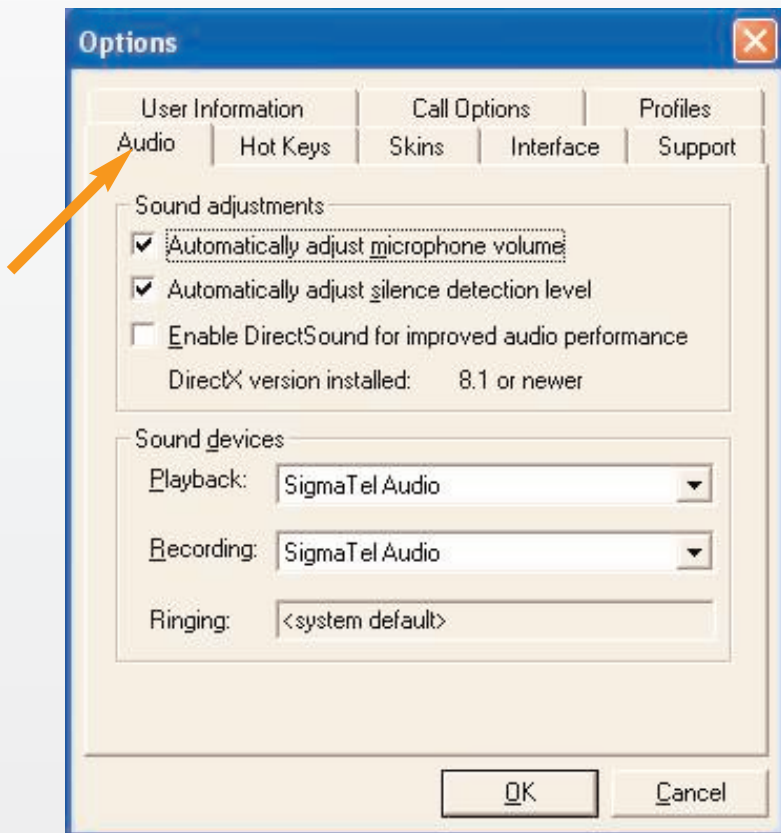
Use this configuration if you have successfully connected to the telecom bridge, can hear the TalkShoe Operator, but cannot get the bridge to recognize your DTMF input (the touch-tone signals/keys).

Configuration 1

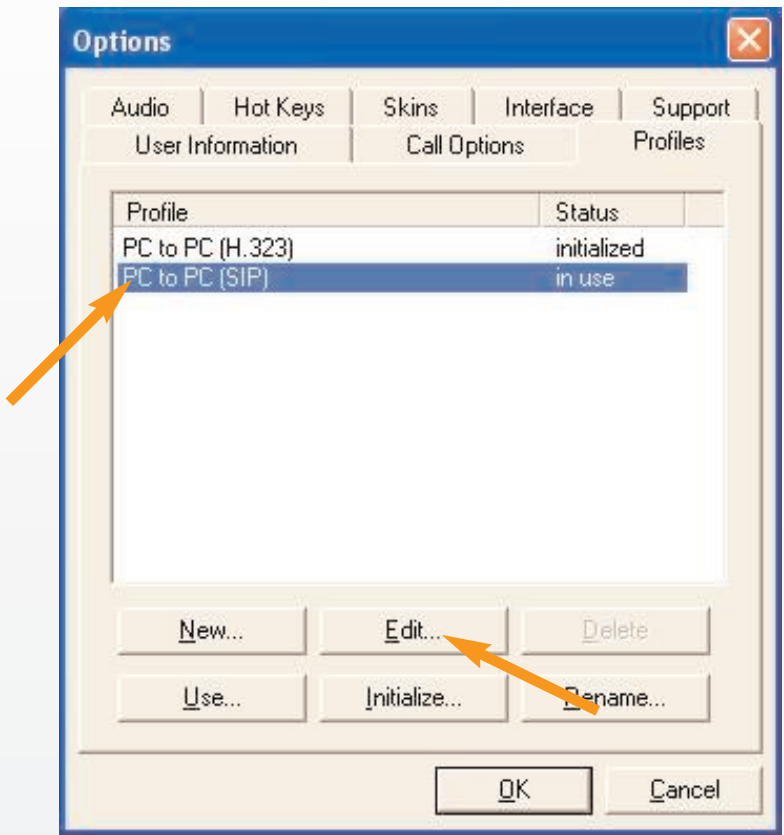
1. After downloading and installing SJPhone, open the program. Click on the small screwdriver button found in the middle of the control window:



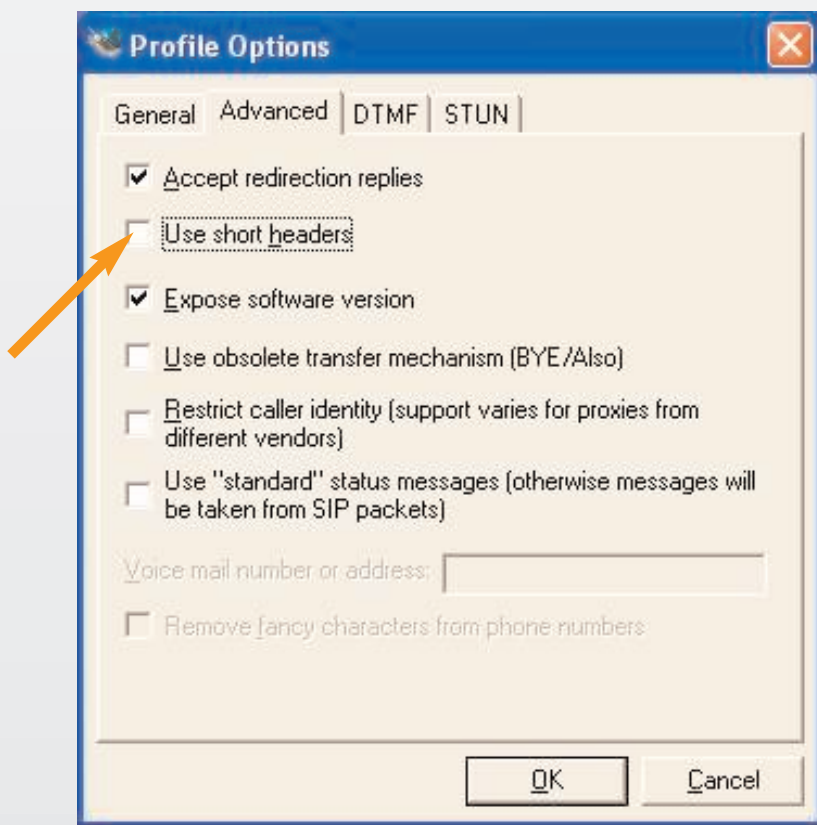
2. Once in the Settings window, click on the “Audio” tab and make sure that your settings are configured exactly like the ones listed below, the exception being that your audio devices may be different from the ones used in this guide. Make sure that “Playback” is set to your default audio-out device, and “Recording” is set to your default audio-in device:



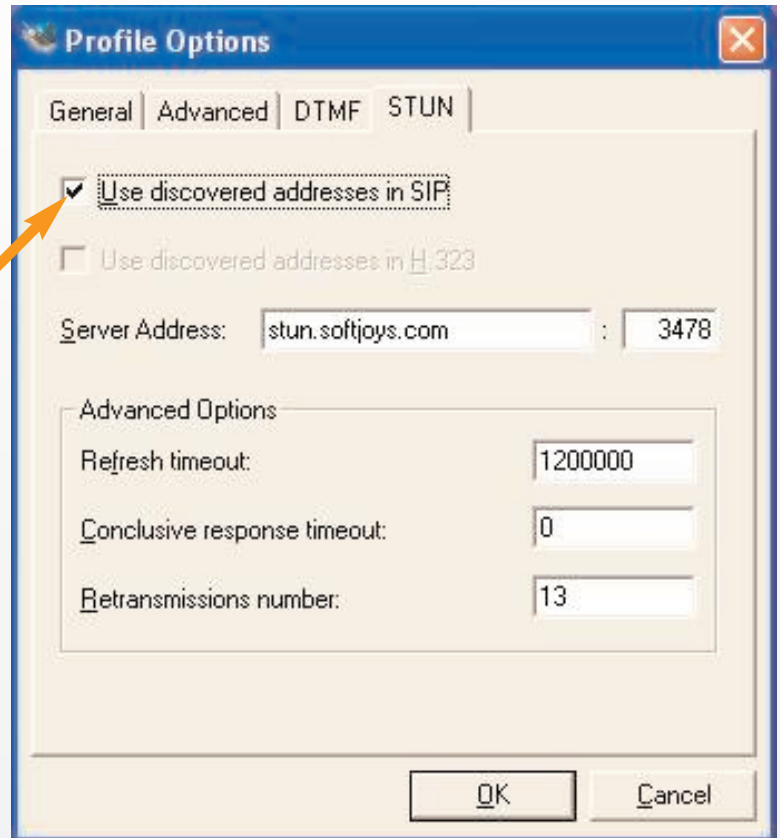
3. Now, click on the “Profiles” tab. Select “PC to PC (SIP)” and click the “Edit” button:



4. Click on the “Advanced” tab, and make sure that “Use Short Headers” is UNCHECKED:



5. Click the “STUN” tab. Make sure that “Use discovered addresses in SIP” is CHECKED:



6. Once you have your settings configured, click “OK” in the “Profile Options” window, then “OK” in the “Options” window.

Turn to page 11.

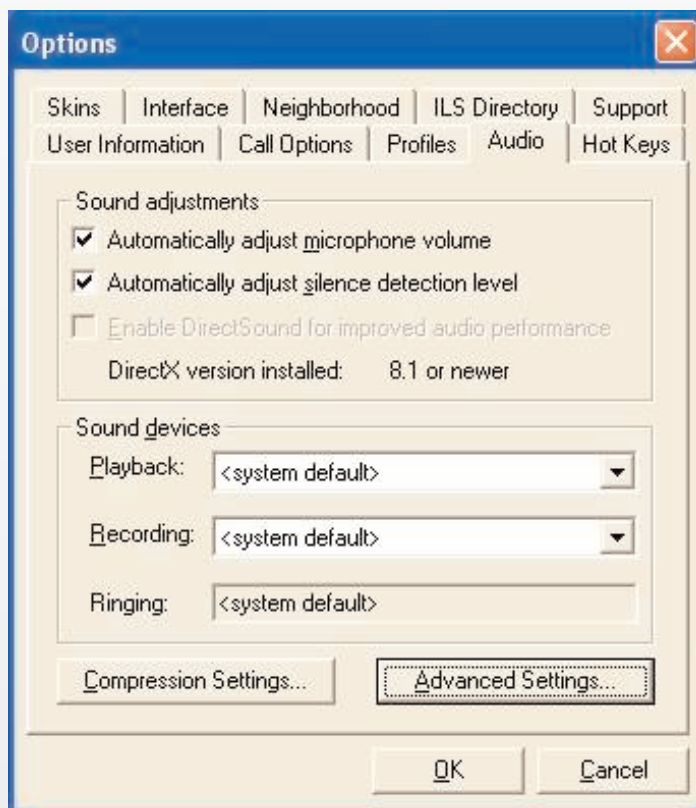
You've successfully completed part 1.

Configuration 2

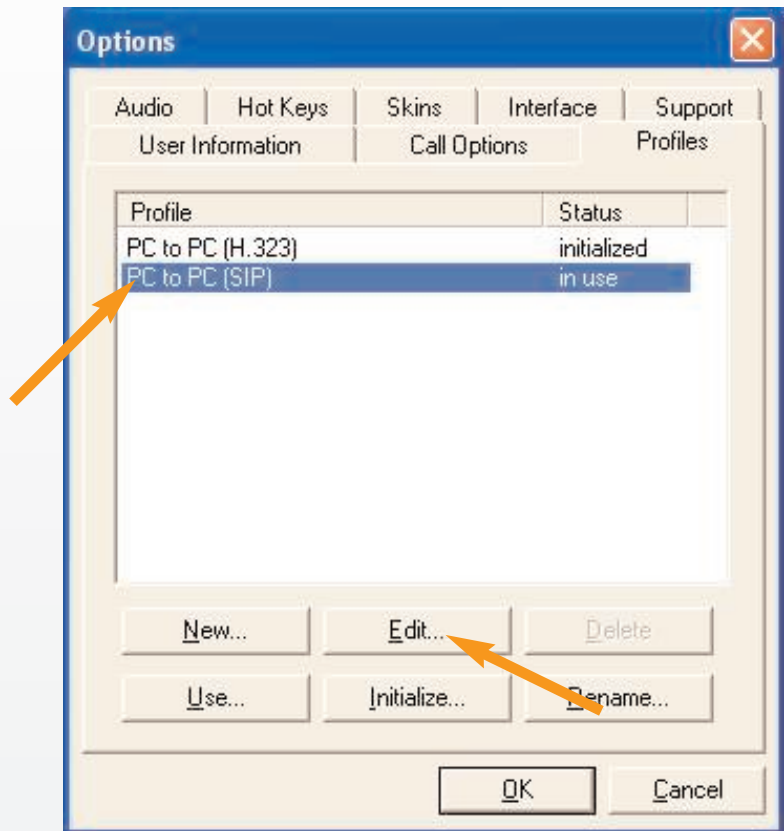
1. After downloading and installing SJPhone, open the program. Click on the small screwdriver button found in the middle of the control window:



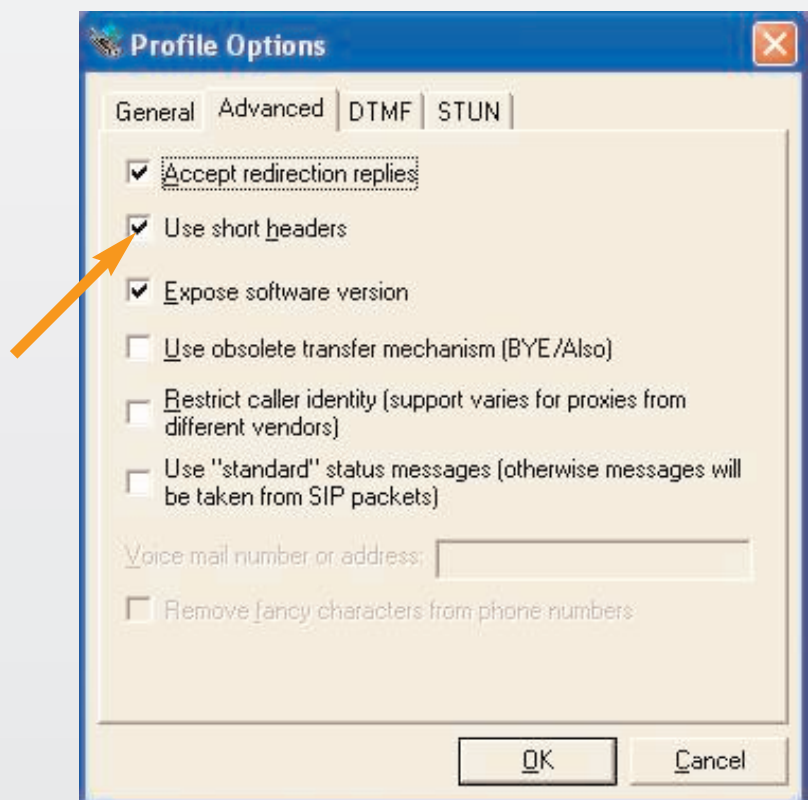
2. Once in the Settings window, click on the "Audio" tab and make sure that your settings are configured exactly like the ones listed below, the exception being that your audio devices may be different from the ones used in this guide. Make sure that "Playback" is set to your default audio-out device, and "Recording" is set to your default audio-in device:



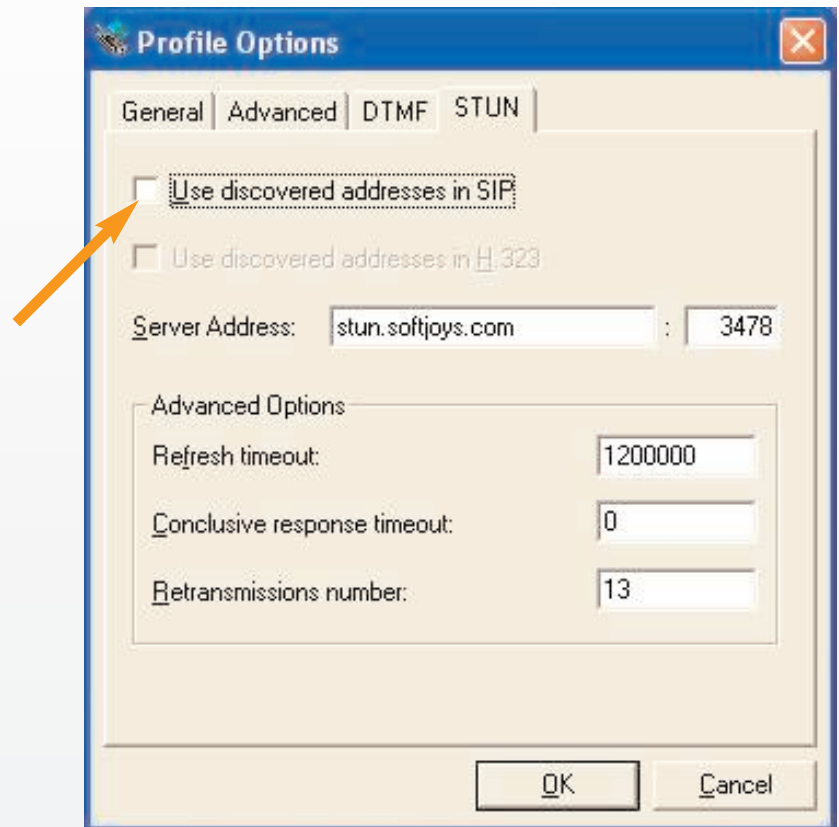
- Now, click on the "Profiles" tab. Select "PC to PC (SIP)" and click the "Edit" button:



- Click on the "Advanced" tab, and make sure that "Use Short Headers" is CHECKED:



5. Click the "STUN" tab. Make sure that "Use discovered addresses in SIP" is UNCHECKED:



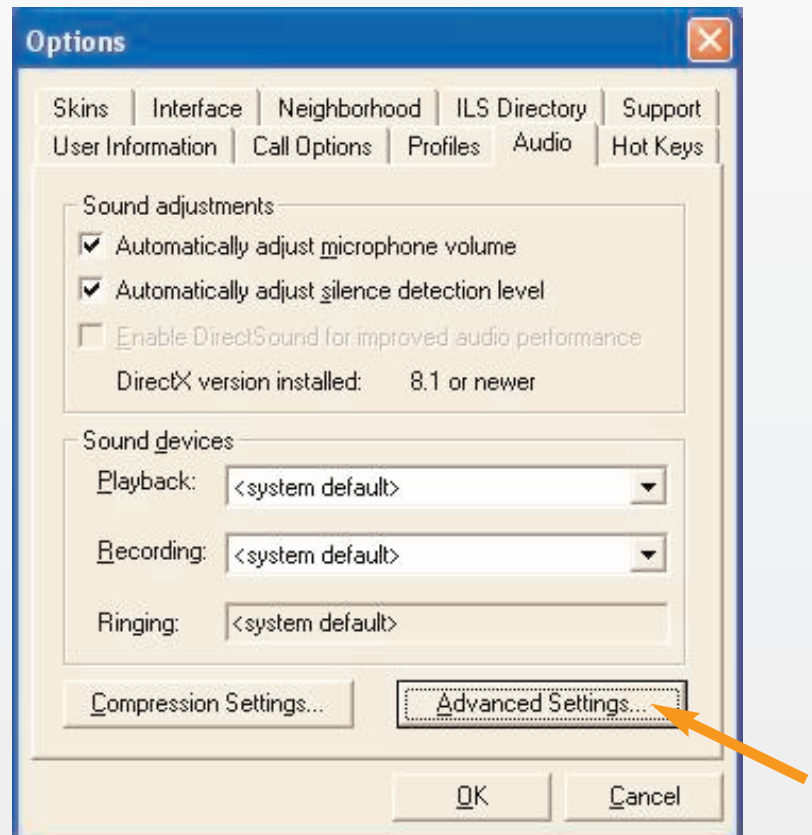
6. Once you have your settings configured, click "OK" in "Profile Options" and then "OK" in "Options".

Turn to page 11.

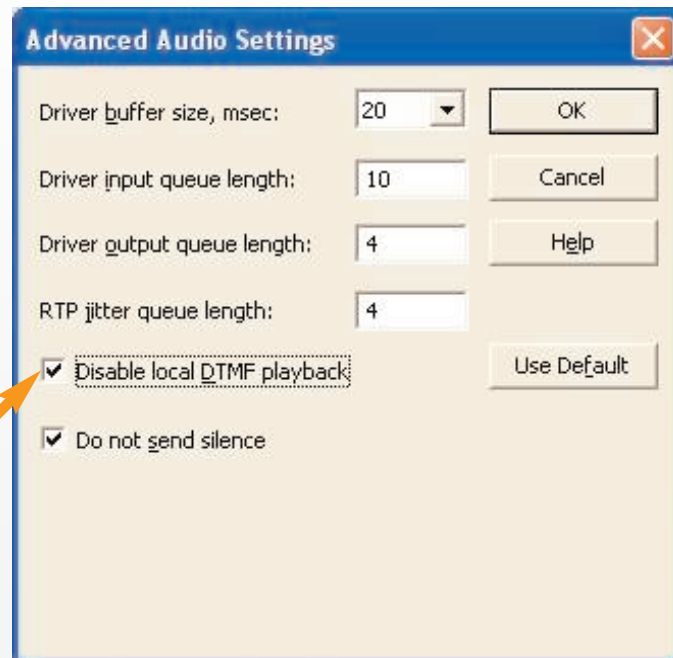
You've successfully completed part 1.

Configuration 3

1. If you are hearing audio back from the TalkShoe Operator, but cannot get the Operator to recognize your DTMF (touch-tone signals), then you only need to adjust one setting in your current configuration.
2. Right-click the main window in SJPhone where you should see “PC to PC (SIP) Ready to Call” and select “To Advanced Mode”. Now, click the screwdriver button and head back to the “Audio” tab. Once there, click the “Advanced Settings” button:



- Once in the “Advanced Audio Settings” window, check the “Disable local DTMF playback” box:



- Once you have completed this step, click “OK” in the “Advanced Audio Settings” window, then “OK” in the “Options” window.

Turn to page 11.

You’ve successfully completed part 1.

Launch TalkShoe Live™

1. Head to www.talkshoe.com and follow the instructions listed on the site to launch your TalkCast™.
2. Once the TalkShoe Live! window appears, minimize it and head back to SJPhone.

Connect to TalkShoe Using SJPhone

1. Enter the TalkShoe direct-connect VoIP address: **66.212.134.192** into the SJPhone dialer-window, and click the “Send” button:



2. Follow the prompts given by the TalkShoe Operator (to enter your Community Call ID and PIN). You can use the keypad found on the SJPhone control window, just like you would use your touch-tone phone keypad.
3. Maximize TalkShoe Classic! *Note: Optionally, you can also plug in an iPod, soundboard, additional computer, etc., with a dubbing cable (male to male) connection into your computer to transmit audio through SJPhone to your guests.
4. You'll notice that you are now connected to the voice-chat of your Community Call and will be able to communicate with your guests, just as you would with a regular phone!

Congratulations!

You've successfully completed this tutorial.

USING VoIP WITH TALKSHOE



12300 Perry Hwy. Suite 306

Wexford, PA 15090

724.935.TALK (8255)

www.talkshoe.com

info@talkshoe.com

© 2006 TalkShoe. All Rights Reserved. (9/06)